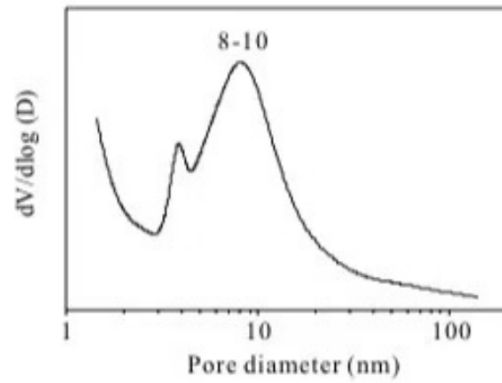
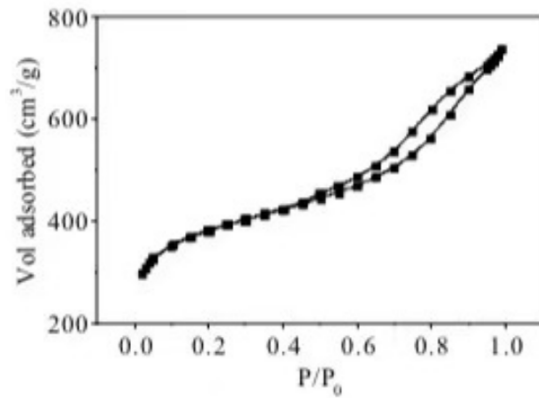


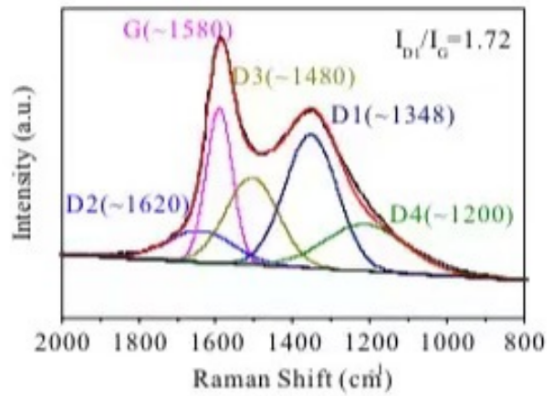
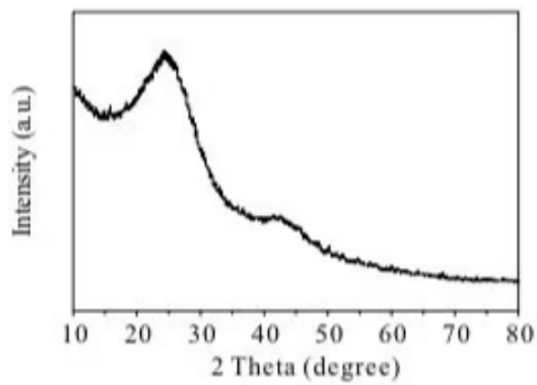
活性炭 JAC-2000-9

技术参数

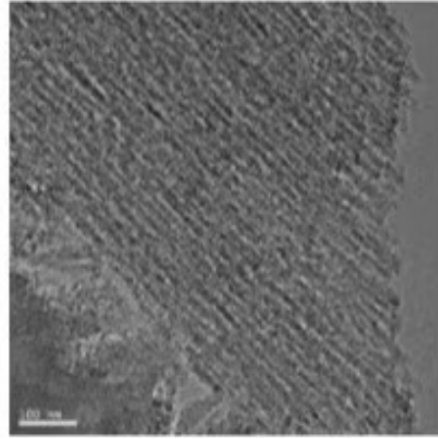
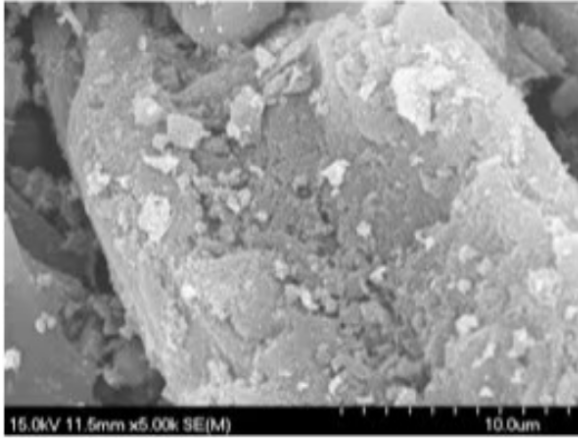
比表面积 (m ² /g)	2000+200
密度 (g/l)	300±15
粒度 (μ m)	74
孔容 (cm ³ /g)	1.75±15
灰份 (%)	4-5
水容量 (%)	1120±30
孔径 (nm)	8-10



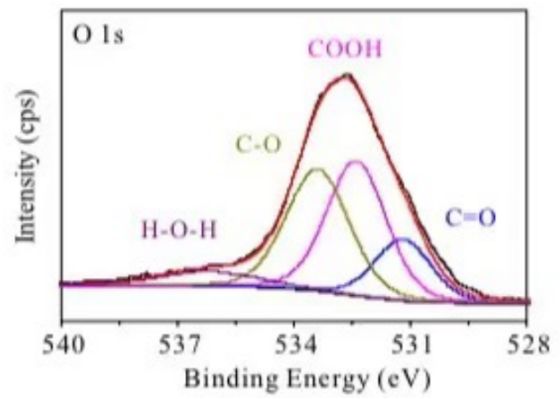
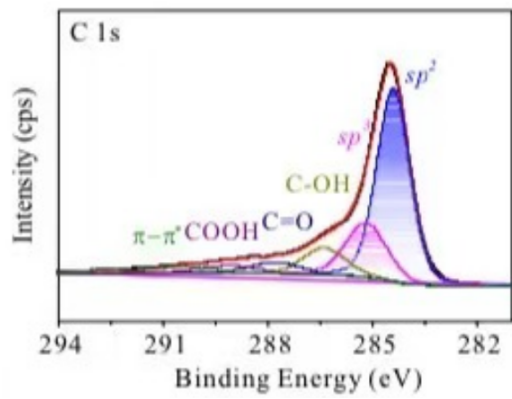
氮气物理吸附等温线及孔径分布图



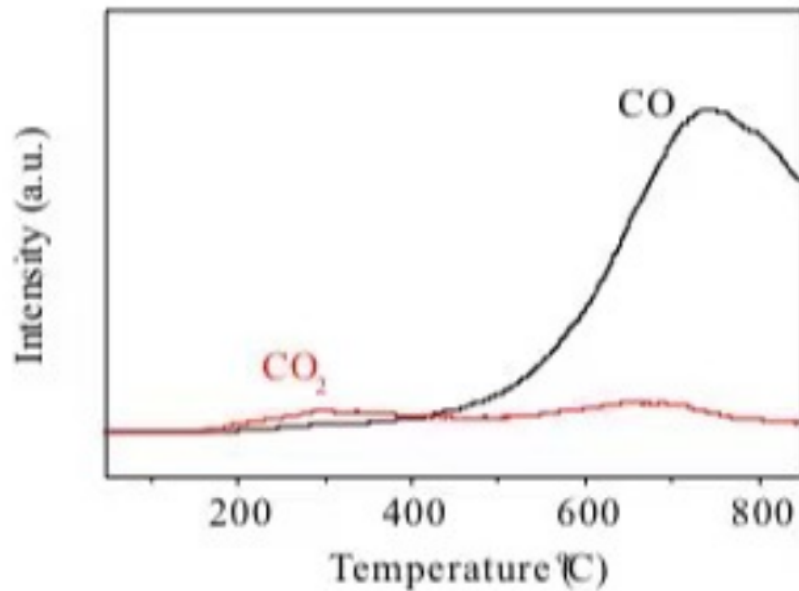
XRD 和拉曼测试图



扫描/透射电镜-微观结构



XPS 分析



Ar-TPD-MS 分析(表面官能团)